



# Bluegrass

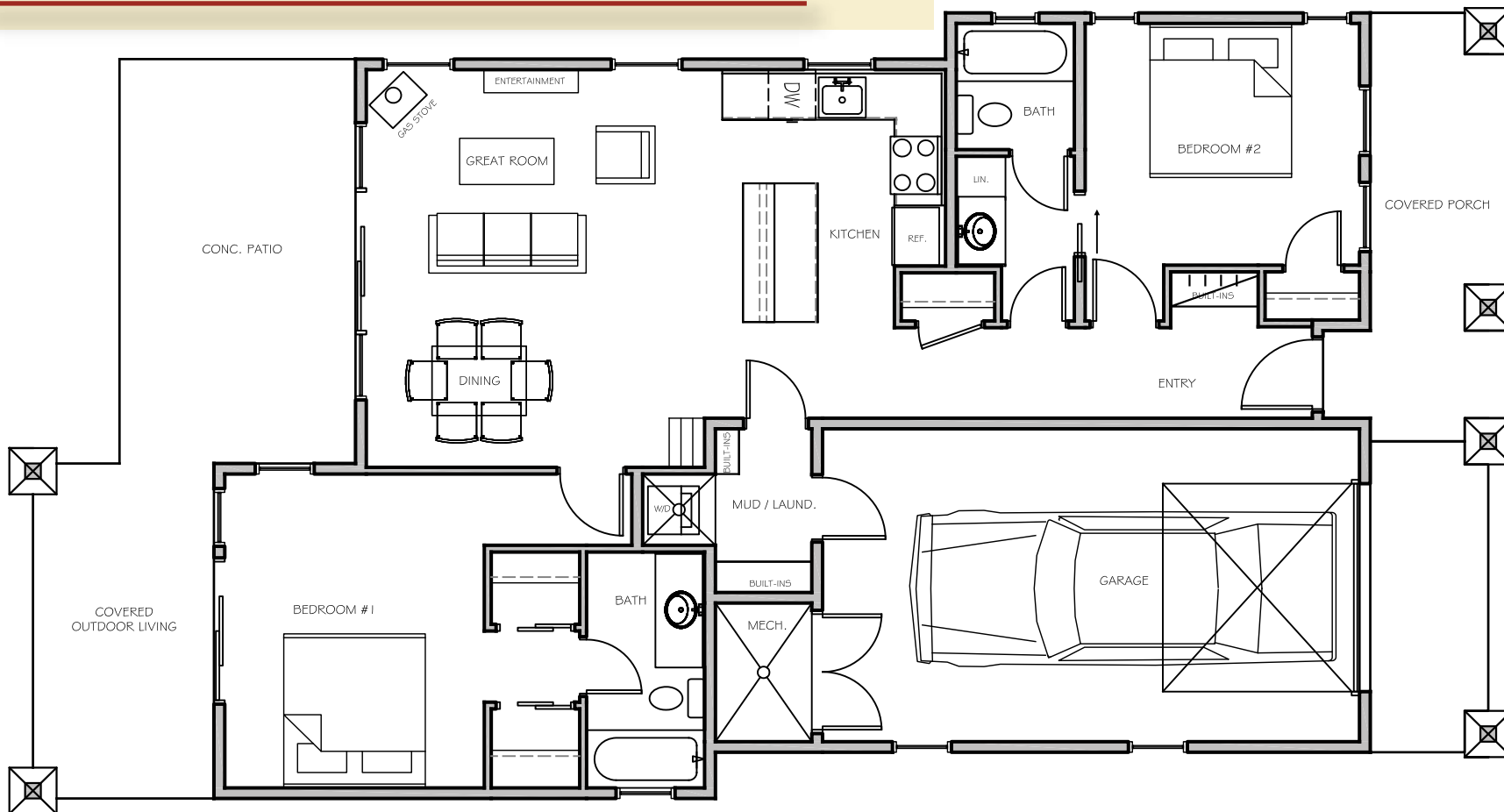
One Car Garage

Cozens Meadow Neighborhood  
Single Family Home

1,435 Sq. Ft. / Base Price \$399,000  
2 bedrooms, 2 bathrooms, 1 car garage

\*Optional Upper Level 3rd Bedroom and Bath an additional \$50,000

Main Level: 1,093 s.f.  
Garage: 342 s.f.  
Total Heated: 1,435 s.f.  
Porch: 516 s.f.  
\*Optional Upper Level: 489 s.f.



\*Pricing does not include lot premium.

\*All information and plans subject to change without notice.

[www.grandparkco.com](http://www.grandparkco.com) ~ 970-726-8700 ~ [info@grandparkco.com](mailto:info@grandparkco.com)

# GRAND PARK

## Bluegrass

Two Car Garage

Main Level: 1,454 s.f.  
Garage: 623 s.f.  
Total Heated: 2,077 s.f.  
Porch: 185 s.f.  
\*Upper Level: 503 s.f.

Cozens Meadow Neighborhood  
Single Family Home

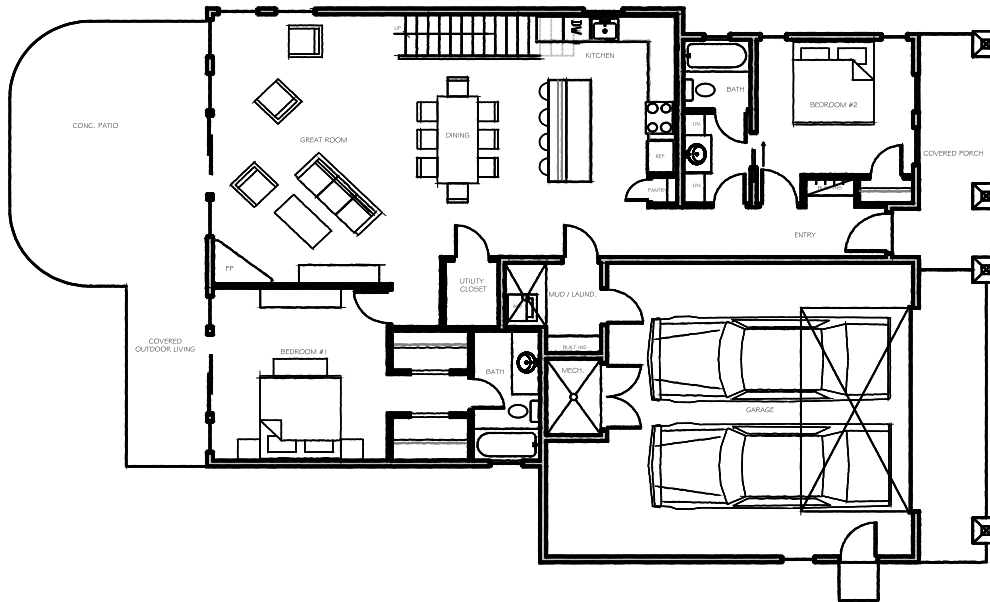
2,077 Sq. Ft. / Base Price \$419,000

2 bedrooms, 2 bathrooms, 2 car garage

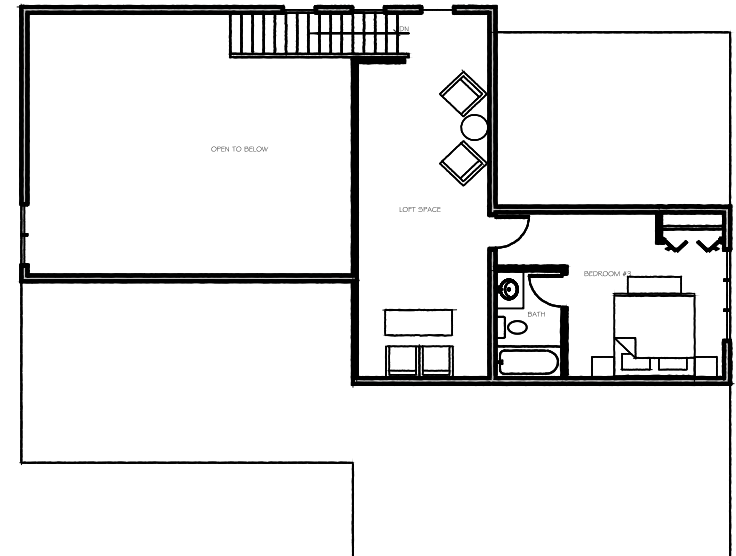
\*Optional Upper Level 3rd Bedroom / Bathroom for additional \$50,000 (503 Sf.)



Main Level



\*Optional Upper Level



\*Pricing does not include lot premium.

\*All information and plans subject to change without notice.

[www.grandparkco.com](http://www.grandparkco.com) ~ 970-726-8700 ~ [info@grandparkco.com](mailto:info@grandparkco.com)

# GRAND PARK

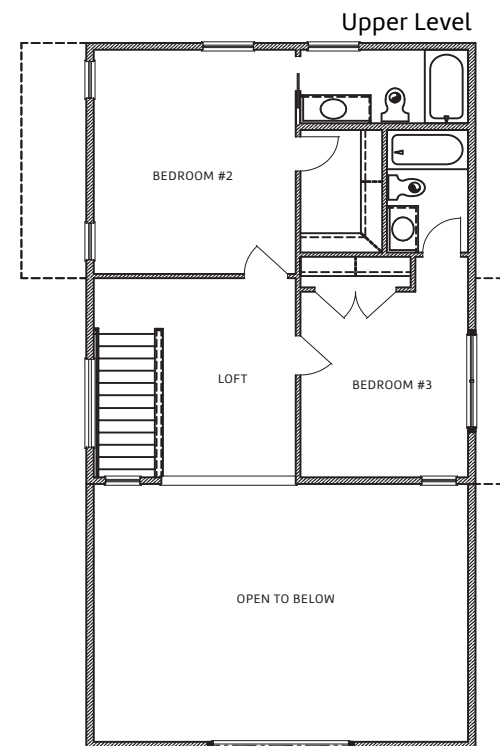
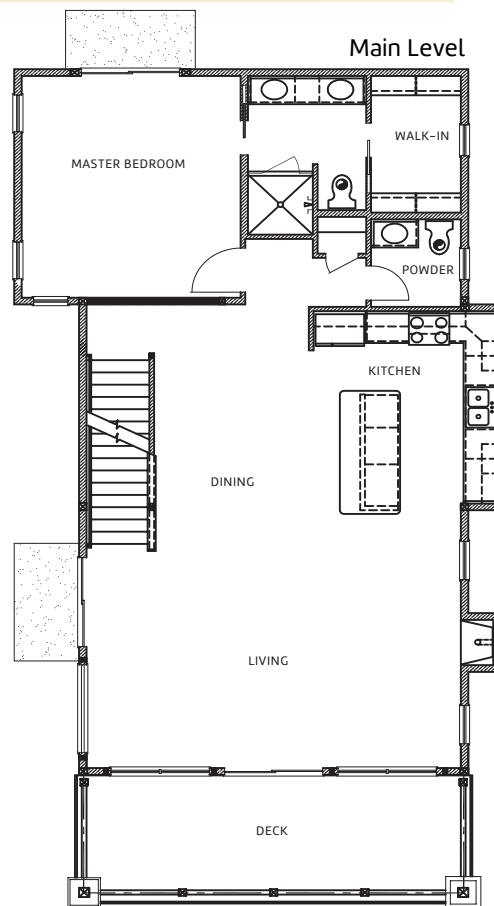
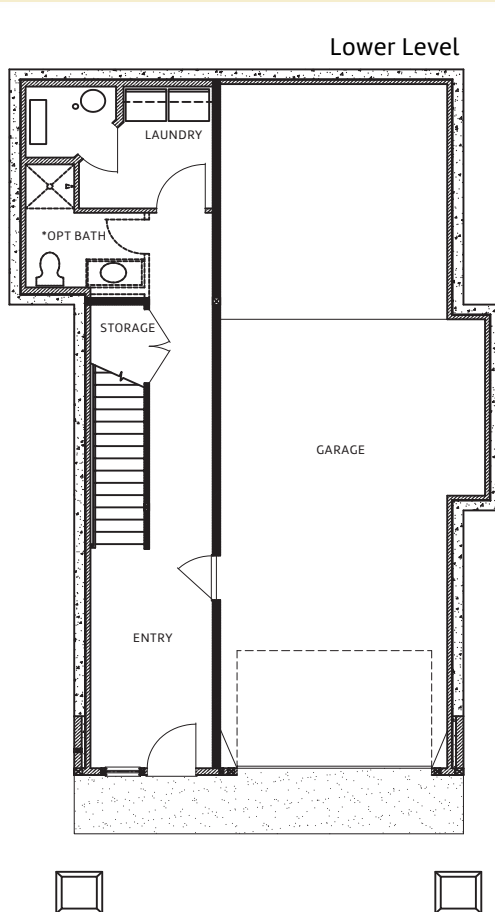
## Conifer

Two Car Tandem Garage

Main Level: 1,249 s.f.  
Upper Level: 698 s.f.  
Lower Level: 444 s.f.  
Garage: 888 s.f.  
Total: 3,196 s.f.  
Deck: 155 s.f.

Cozens Meadow Neighborhood  
Single Family Home

3,196 Sq. Ft. / Base Price \$479,000  
3 bedrooms, 3.5 bathrooms, 2 car tandem garage



\*Pricing does not include lot premium.

\*All information and plans subject to change without notice.

[www.grandparkco.com](http://www.grandparkco.com) ~ 970-726-8700 ~ [info@grandparkco.com](mailto:info@grandparkco.com)

# GRAND PARK

## Lodgepole

Two Car Garage

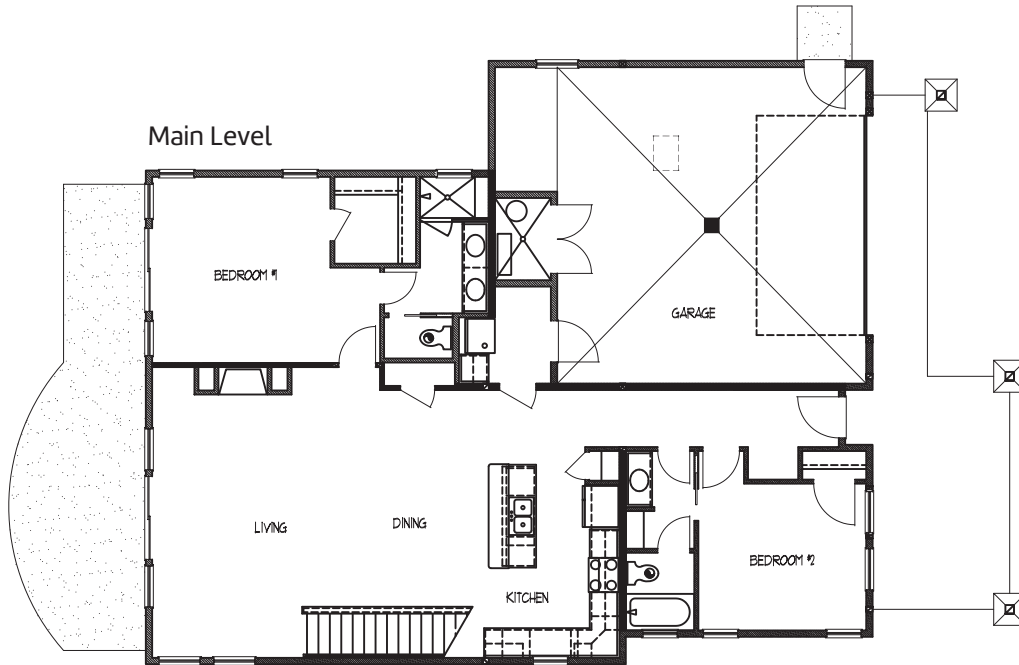
Main Level: 1,458 s.f.  
Garage: 630 s.f.  
Upper Level: 738 s.f.  
Total Heated: 2,826 s.f.  
Porch: 255 s.f.

Cozens Meadow Neighborhood  
Single Family Home

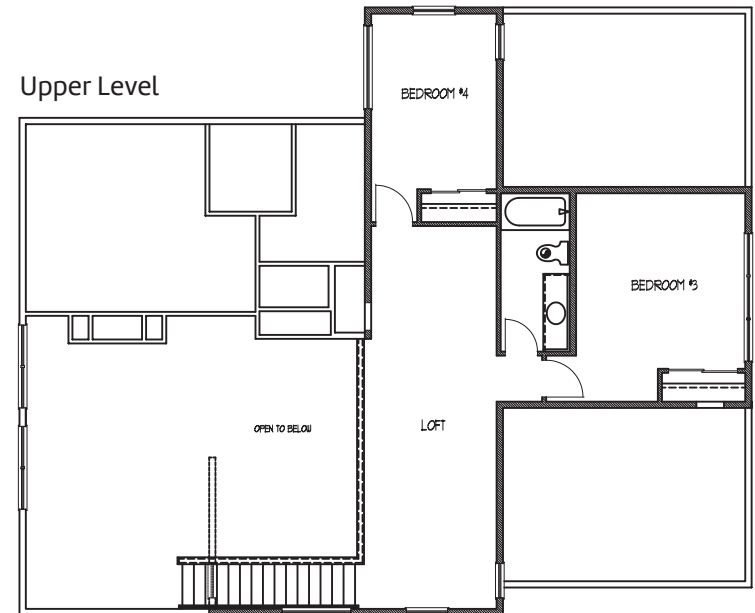
2,826 Sq. Ft. / Base Price \$499,000  
4 bedrooms, 3 bathrooms, 2 car garage



Main Level



Upper Level



\*Pricing does not include lot premium.

\*All information and plans subject to change without notice.

[www.grandparkco.com](http://www.grandparkco.com) ~ 970-726-8700 ~ [info@grandparkco.com](mailto:info@grandparkco.com)

# GRAND PARK

## Woodrose

Two Car Garage

Cozens Meadow Neighborhood  
Single Family Home

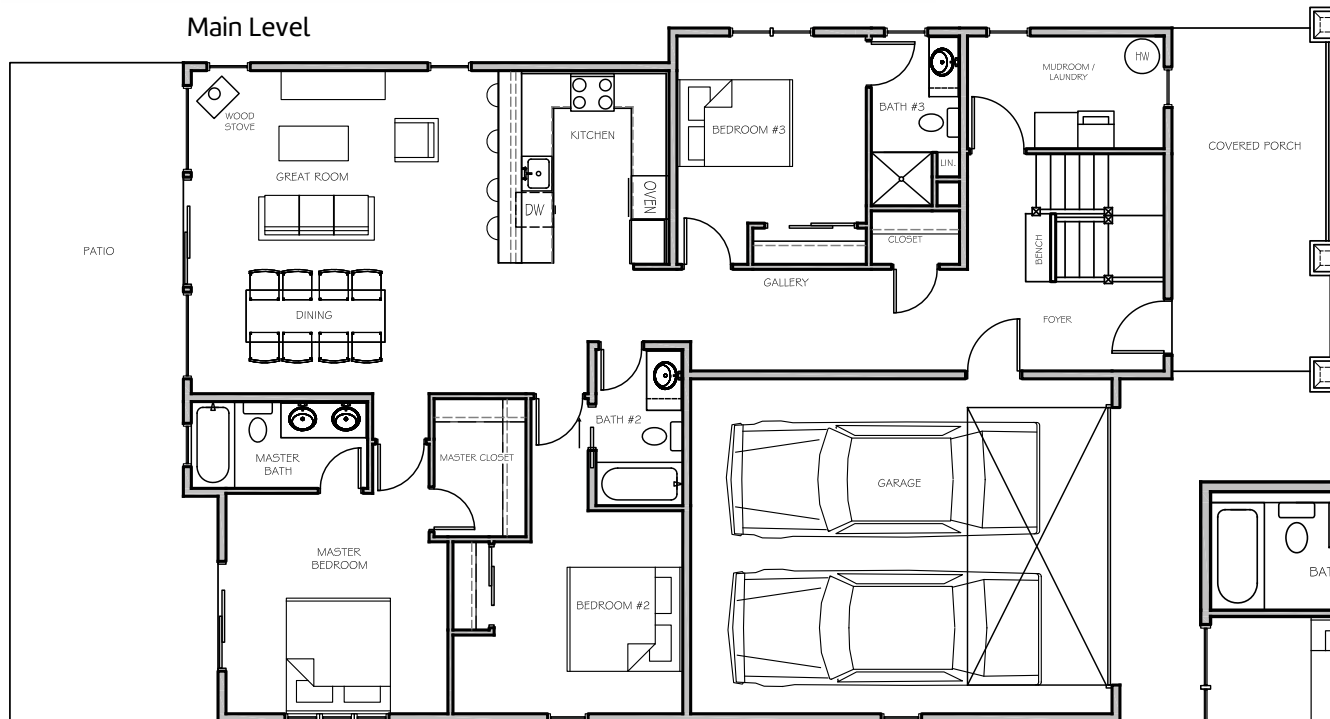
2,136 Sq. Ft. / Base Price \$499,000  
3 bedrooms, 3 bathrooms, 2 car garage

\*Optional Upper Level 4th Bedroom-Bunk Room / Bath an additional \$50,000

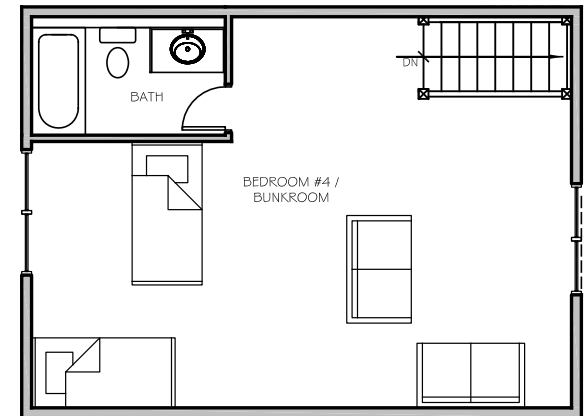
Main Level: 1,636 s.f.  
Garage: 500 s.f.  
Total Heated: 2,136 s.f.  
Porch: 582 s.f.  
\*Optional Bd & Ba: 496 s.f.



Main Level



Upper Level  
\*Optional 496 Sf.



\*Pricing does not include lot premium.

\*All information and plans subject to change without notice.

[www.grandparkco.com](http://www.grandparkco.com) ~ 970-726-8700 ~ [info@grandparkco.com](mailto:info@grandparkco.com)